

Unified Global Security: The Challenge Ahead



Objectives

- Systematic 17-point conveyance inspection process
- Identifying security breaches
- Sealing Criteria
- Seal inspection procedures

Unified Global Security: The Challenge Ahead



17-Point Truck & Trailer Inspection



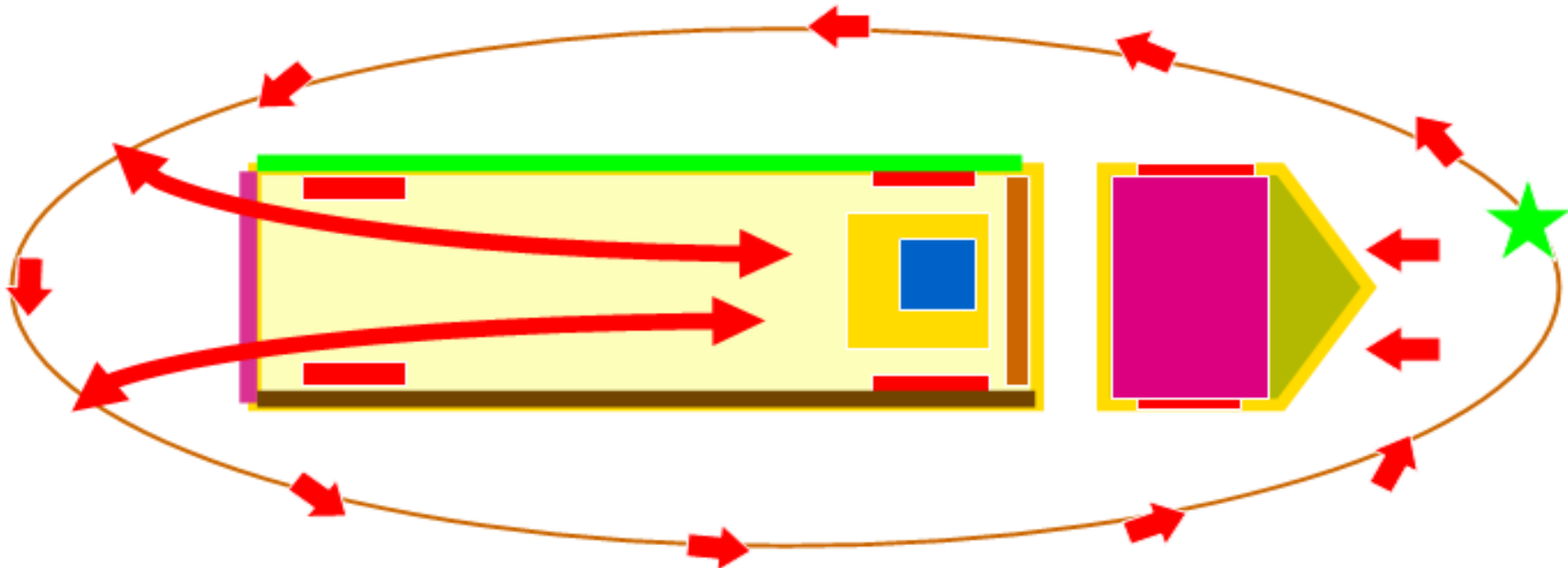
1. Bumper
2. Engine
3. Tires (truck & trailer)
4. Floor (inside truck)
5. Fuel Tanks
6. Cab/ Storage Compartments
7. Air Tanks
8. Drive Shafts
9. Fifth Wheel
10. Outside/ Undercarriage
11. Floor (inside)
12. Outside/ Inside Doors
13. Side Walls
14. Ceiling/ Roof
15. Front Wall
16. Refrigeration Unit
17. Exhaust

Unified Global Security: The Challenge Ahead



Conduct a Systematic Inspection

Begin and end your inspection at the same point every time.



Unified Global Security: The Challenge Ahead

Bumpers

Point 1



Unified Global Security: The Challenge Ahead



Engine Area

Point 2



Unified Global Security: The Challenge Ahead



Tires



Unified Global Security: The Challenge Ahead

Tires

- Recently Mounted
- Tampered Bolts
- Water Streaks



Unified Global Security: The Challenge Ahead

Floor

Point 4



Unified Global Security: The Challenge Ahead

Fuel Tanks/Battery Box

Point 5



Unified Global Security: The Challenge Ahead

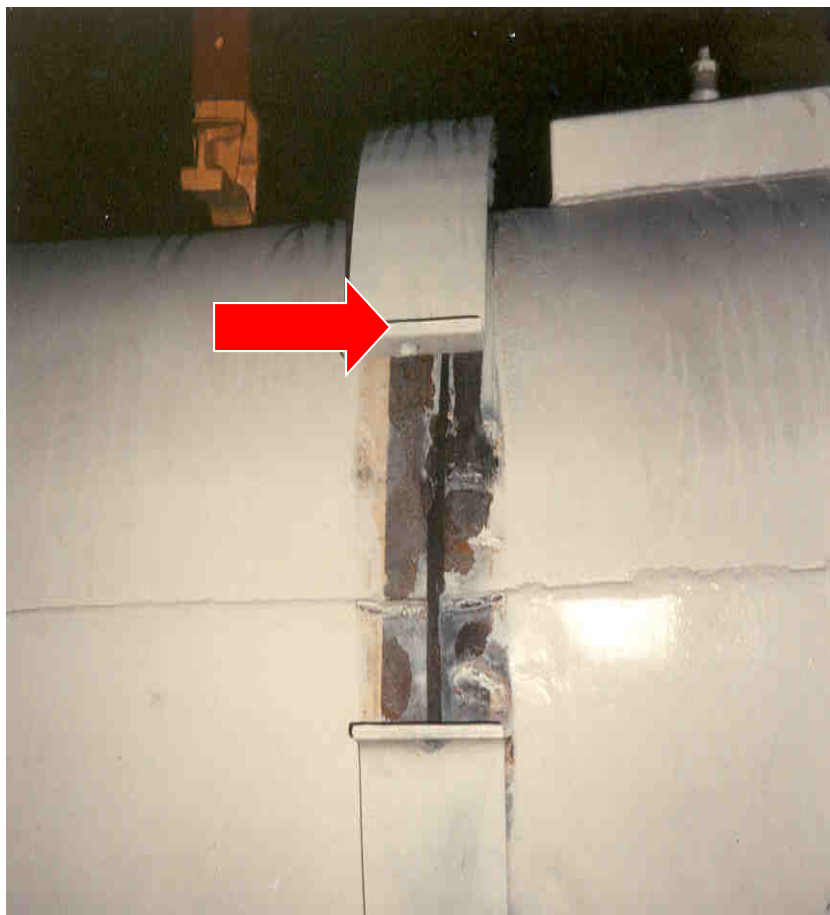


Fuel Tank Compartment



Unified Global Security: The Challenge Ahead

Fuel Tank



Unified Global Security: The Challenge Ahead

Cab/Sleeper



Unified Global Security: The Challenge Ahead

Storage Compartment

Point 6



Unified Global Security: The Challenge Ahead



Air Tanks



Unified Global Security: The Challenge Ahead

Drive Shaft

Point 8



Unified Global Security: The Challenge Ahead



Fifth Wheel Area

Point 9



Unified Global Security: The Challenge Ahead



False Floor in Fifth Wheel



Unified Global Security: The Challenge Ahead



Fifth Wheel Area

Point 9



Unified Global Security: The Challenge Ahead



Outside Undercarriage



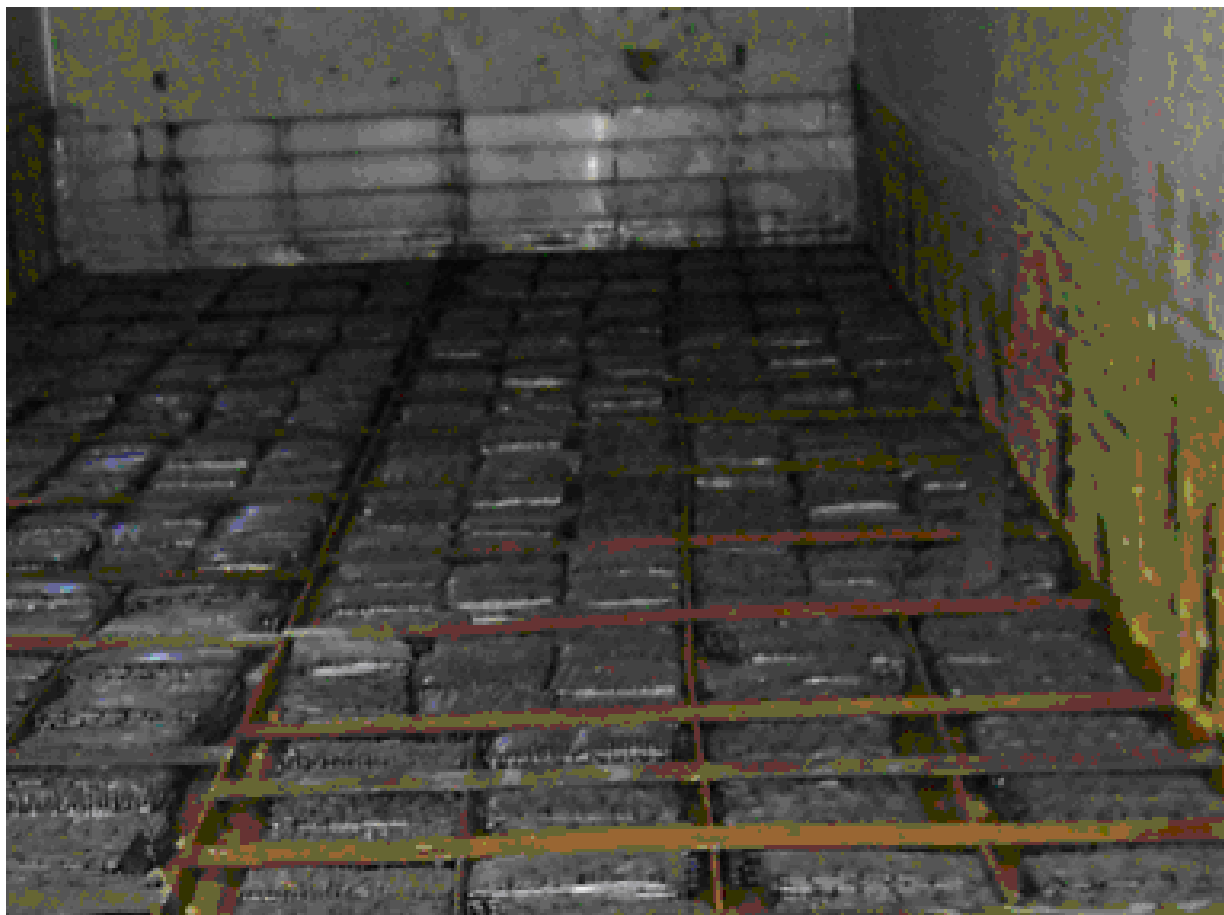
Unified Global Security: The Challenge Ahead

False Floor



Unified Global Security: The Challenge Ahead

False Floor in Trailer



Unified Global Security: The Challenge Ahead

Floor Compartment

Point 11



Unified Global Security: The Challenge Ahead

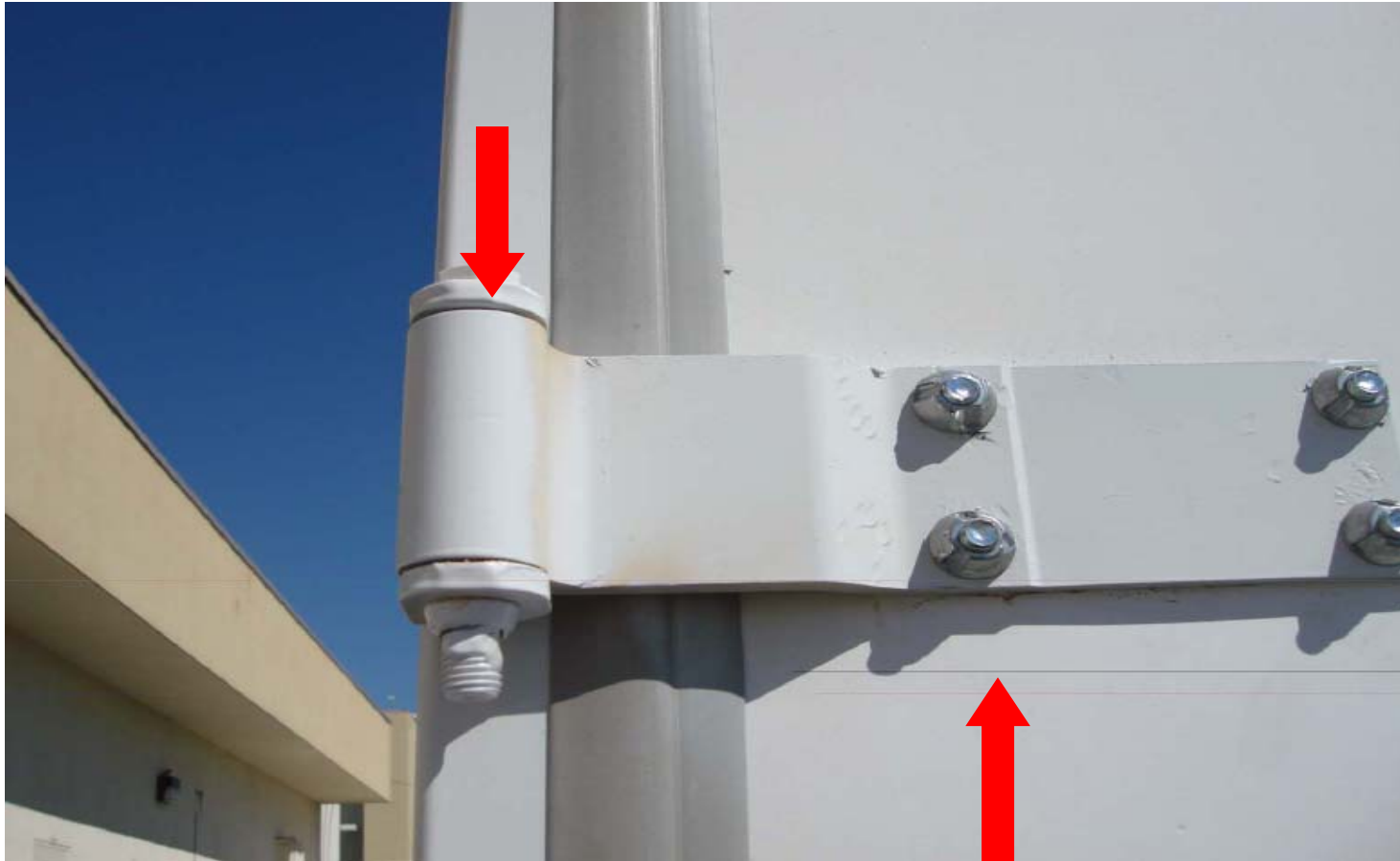


Door Hardware



Unified Global Security: The Challenge Ahead

Check Hinges



Unified Global Security: The Challenge Ahead



Side Wall Compartments

Point 13



Unified Global Security: The Challenge Ahead



Side Walls



Unified Global Security: The Challenge Ahead

Side Wall Kick Panel



Unified Global Security: The Challenge Ahead

Ceiling/Roof



Unified Global Security: The Challenge Ahead



Roof Compartments

Point 14



Unified Global Security: The Challenge Ahead



Roof Compartments



Unified Global Security: The Challenge Ahead

Front Wall Compartments



Unified Global Security: The Challenge Ahead

Dry Box – Front Wall

Point 15



Unified Global Security: The Challenge Ahead



Contraband in False Wall



Unified Global Security: The Challenge Ahead

Refrigeration Unit



Unified Global Security: The Challenge Ahead

Exhaust / Air Deflector



Unified Global Security: The Challenge Ahead

Procedures for a Sealed Container

- Conduct a systematic 7-point inspection
- Verify the trailer/container integrity prior to leaving the yard and any stop while in transit to the border.
- Verify the seal number and seal integrity

Unified Global Security: The Challenge Ahead



7-Point Inspection

- Be systematic



Unified Global Security: The Challenge Ahead

C-TPAT Criteria...

Container Security (Importer):

- Container integrity must be maintained to protect against the introduction of unauthorized material and/or persons.
- At point of stuffing, procedures must be in place to properly seal and maintain the integrity of the shipping containers.
- A high security seal must be affixed to all loaded containers bound for the U.S.
- All seals must meet or exceed the current ISO/PAS 17712 standards for “High Security” seals.



Unified Global Security: The Challenge Ahead

C-TPAT Criteria...

Container Security (Highway Carrier):

- When transporting a container or trailer for a C-TPAT importer, a high security seal that meets or exceed the current ISO PAS 17712 standards for high security seals must be utilized.

Trailer Seals (Highway Carrier):

- The sealing of trailers, to include continuous seal integrity, are crucial elements of a secure supply chain, and remains a critical part of a carrier's commitment to C-TPAT.
- A high security seal must be affixed to all loaded trailers bound for the U.S. All seals must meet or exceed the current ISO PAS 17712 standards for high security seals.

Unified Global Security: The Challenge Ahead

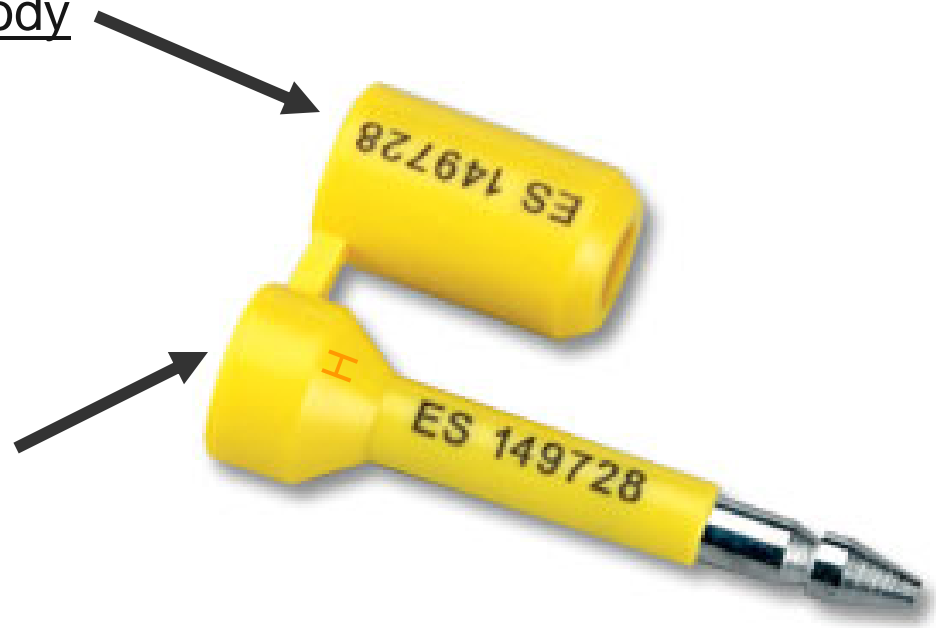


How Do You Know?

- Look for the “H” stamped on the seal:

Bottom of the locking body

Top of the steel bolt or rod



Unified Global Security: The Challenge Ahead

C-TPAT Criteria...

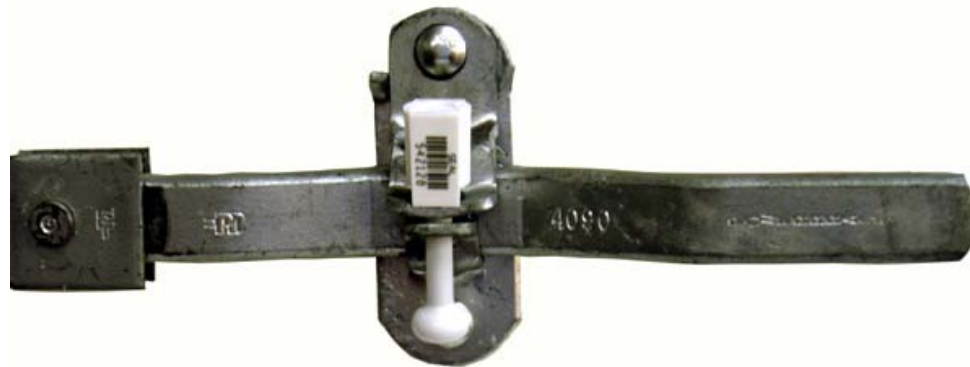
- Seal Affixing Process:
 - Only designated, authorized employees must distribute and affix container seals for integrity purposes. The fewer people who have access to seals, the better!
 - Unauthorized employees must never handle seals!



Unified Global Security: The Challenge Ahead

Container/ Trailer Seals...

- Seal Affixing Process:
 - Seals should be affixed to the right door of the container/ trailer on the hasp that has the welded rivet. This practice will raise the level of security for the shipment.
 - After the seal is affixed to the container, an authorized employee should make sure that the seal is secure by pulling down on it.



Unified Global Security: The Challenge Ahead

Container/ Trailer Seals...

Affix Seal

Outside Doors:



Detachable or loose bolts can allow access inside container



Unified Global Security: The Challenge Ahead



Container/ Trailer Seals...

Affix
Seal



Unified Global Security: The Challenge Ahead



Container/ Trailer Seals...

Affix
Seal



Detachable or loose bolts can allow access inside container



Unified Global Security: The Challenge Ahead



Container/ Trailer Seals...

Affix
Seal



Unified Global Security: The Challenge Ahead



Container/ Trailer Seals...

Affix Seal



Unified Global Security: The Challenge Ahead



Seal Inspection

Seal Verification and Inspection Process:

V V T T

V - View seal & container locking hardware

V - Verify seal number

T - Tug on seal to make sure it's on right

T - Twist & turn seal to make sure it doesn't unscrew

Unified Global Security: The Challenge Ahead



Seal Inspection

- Seal Verification and Inspection Process:
 - View seal & container locking mechanisms.
 - Excessive damage to the seal or locking mechanisms must be reported to a Supervisor before opening the container.

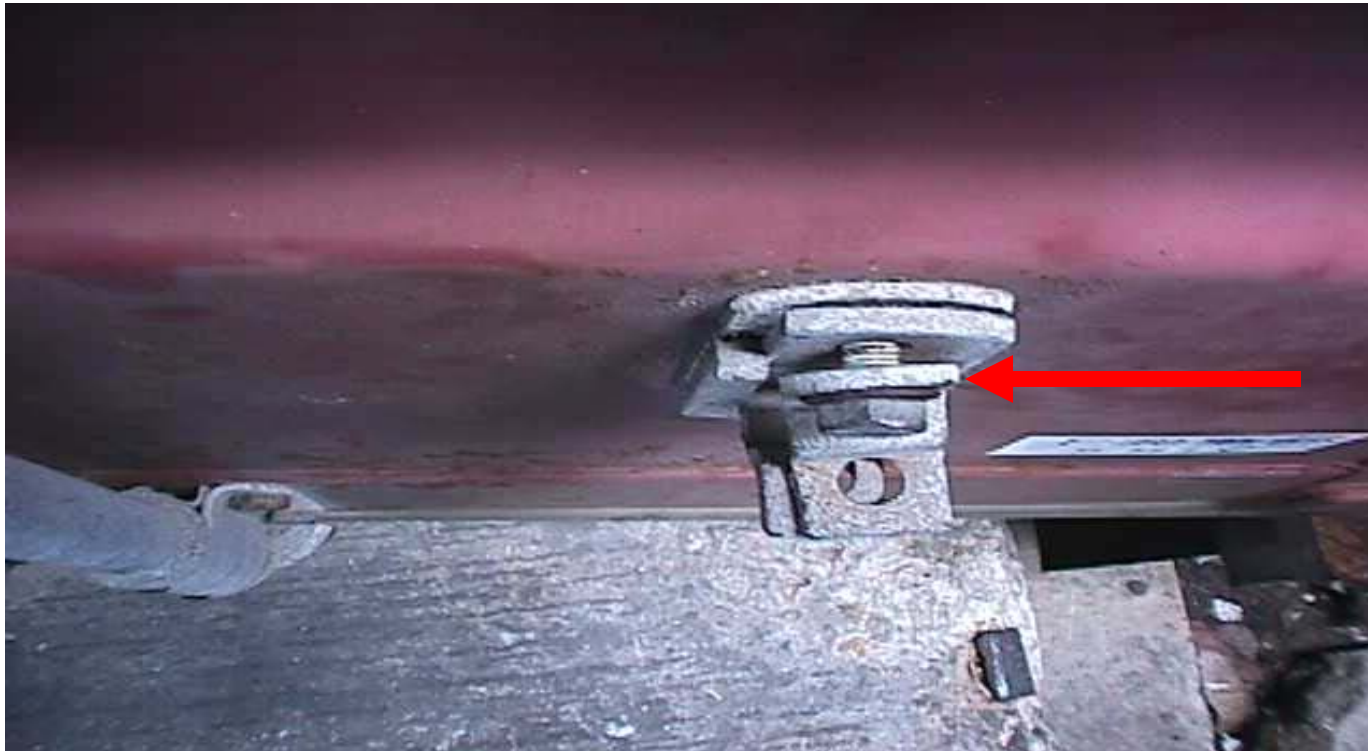


Unified Global Security: The Challenge Ahead

Seal Inspection

View
Seal

- Seal Verification and Inspection Process:
 - View seal & container locking mechanisms.



Look for loose bolt and hasp

Unified Global Security: The Challenge Ahead

Seal Inspection

Verify
Seal

- Seal Verification and Inspection Process:
 - Verify seal number for accuracy.



Seal number must match paperwork.

Unified Global Security: The Challenge Ahead



Seal Inspection

Tug
Seal

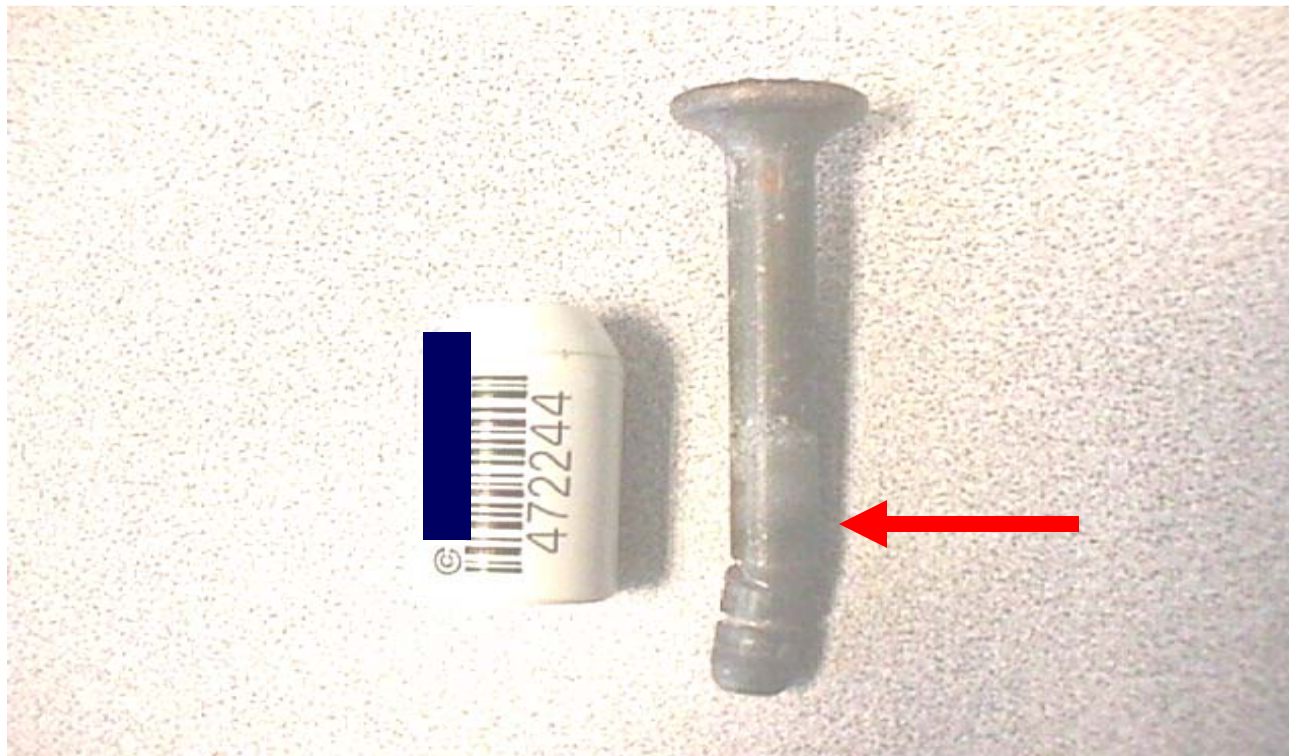
- Seal Verification and Inspection Process:
 - Tug on seal to make sure it is affixed properly. Seals that come apart must be reported to a Supervisor before opening the container. The container might have contraband inside!



Unified Global Security: The Challenge Ahead

Seal Inspection

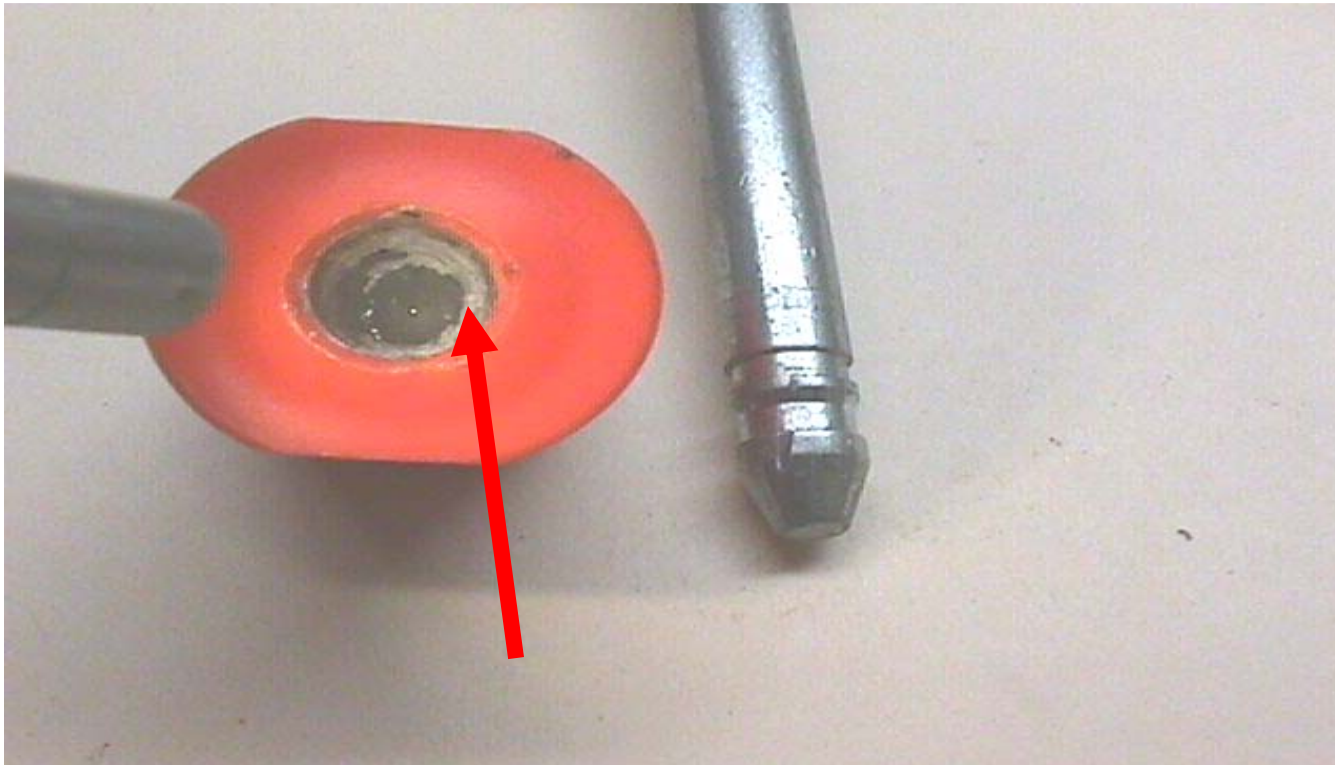
- Seal Verification and Inspection Process:
 - Tug on seal to make sure it is affixed properly.



Seal stem is bent. Seal does not lock properly.

Seal Inspection

- Seal Verification and Inspection Process:
 - Tug on seal to make sure it is affixed properly.



Glue inside locking mechanism. Seal does not lock properly.

Unified Global Security: The Challenge Ahead

Seal Inspection

- Seal Verification and Inspection Process:
 - Twist & Turn seal to make sure it does not come off.
 - If a Seal is threaded, it can be unscrewed to gain access.



Unified Global Security: The Challenge Ahead

Seal Inspection

- Seal Verification and Inspection Process:
 - Twist & Turn seal to make sure it does not unscrew.



Twist counter-clockwise to unscrew.

Unified Global Security: The Challenge Ahead

Evidence is Always Present

- Visual indications that an area has been disturbed or altered
- Recognition of normal factory construction, normal oxidation, and dirt accumulation from road use.

Unified Global Security: The Challenge Ahead



Inspection Points

- Scratches
- Burn/Weld Marks
- Tampered Bolts/Rivets
- Fresh Grease
- Fresh Paint
- Silicone
- Fiberglass Patchwork
- Odor Masking Substances
- After Market Modifications

Unified Global Security: The Challenge Ahead



Summary

- Establish an inspection process that fits your fleet.
- Train your drivers on how to conduct an inspection and verify the seals.
- Management should follow up to ensure drivers are following the established inspection procedures.
- Report all suspicious activity to the appropriate law enforcement agency.

Unified Global Security: The Challenge Ahead



Questions?

- Contact your assigned SCSS
- Reference the portal
- or email: industry.partnership@dhs.gov

Unified Global Security: The Challenge Ahead



Unified Global Security: The Challenge Ahead

